



2012 SEAS Cup General Sailing Instruction

SEAS Cup entry requirements:

All entries will pay to race. The entire series = \$50.00 or per race = \$10.00 collected pre-race.

An entry shall consist of a single-hulled sailing boat, a named skipper who shall be at least 21 years of age, and a crew appropriate to the size and equipment of the boat. Boats not previously rated under PHRF by SEAS must fill out the appropriate rating form and submit it at least 48 hours before the race to permit a proper rating. All boats must meet minimum Coast Guard equipment requirements. A 2012 Coast Guard Auxiliary Safety Inspection is also recommended (Besides - they are free!).

There will be a skipper's meeting at 7 PM the evening prior to the race at the Prospector Hotel Bar, T.K. Maguires, to discuss race specific issues, collect entry forms and fees, discuss weather forecasts, etc. **This meeting is mandatory for anyone who has not turned in their series registration forms and fees.** Pre-registration for the individual races is available to all registered skippers at the SEAS website (<http://seasailing.us/>).

Race starts will occur at the times, dates, locations as described below. All racing will cease no later than 2100. Any boat not yet over the respective finish lines will be recorded as a 'did not finish' (DNF).

Each boat shall record its time and report to the designated race official ASAP. This can be done by calling the race committee member or emailing your times to commodore@seasailing.us. If times are not received within 24 hours the boat may be disqualified from the race.

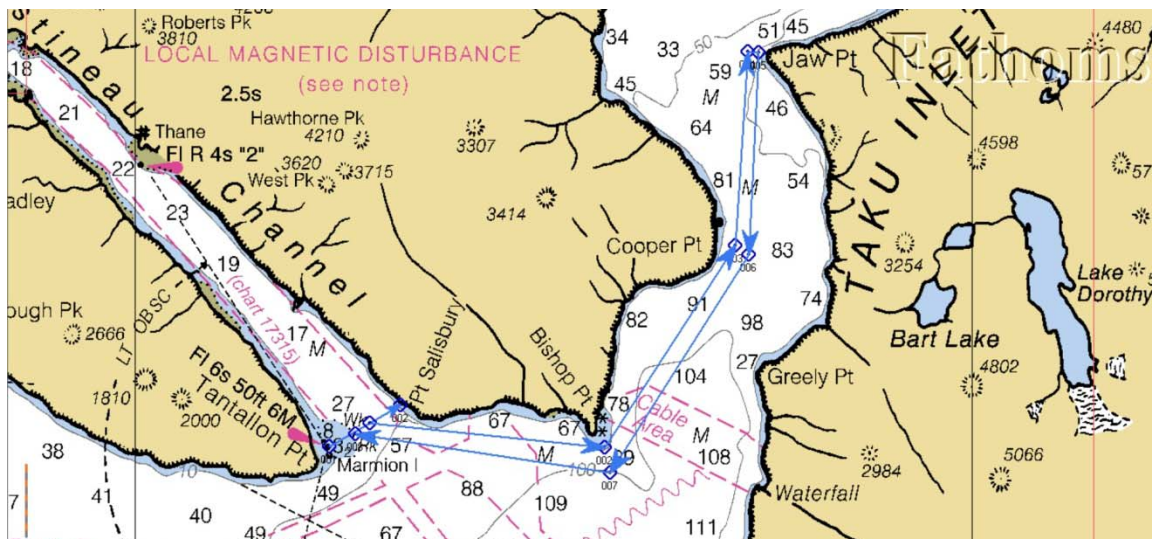
Specific Events Start and Finish Lines

Round 1: Sunday May 13, 2012

Skipper's Choice #1- 1 Leg

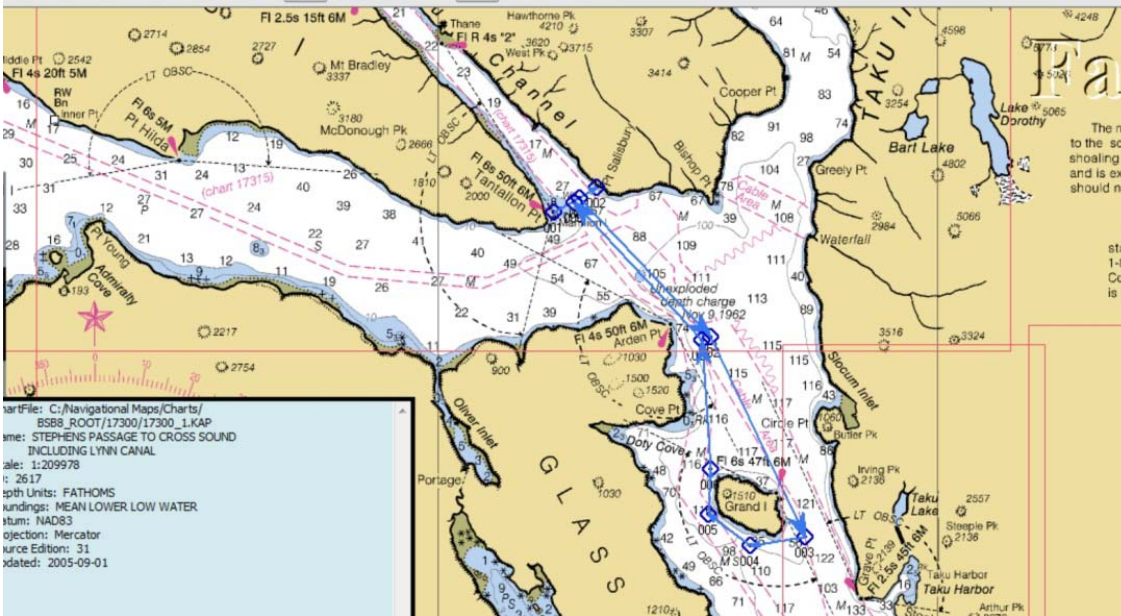
Starting at 10:00 a.m. between the Committee boat and the Marmion Island Day Mark, the boats will sail **ONE** of these courses:

- North into Taku Inlet rounding the buoy off Jaw Point on a starboard tack, returning and crossing an imaginary line bearing 060 magnetic to the Marmion Island Day mark.

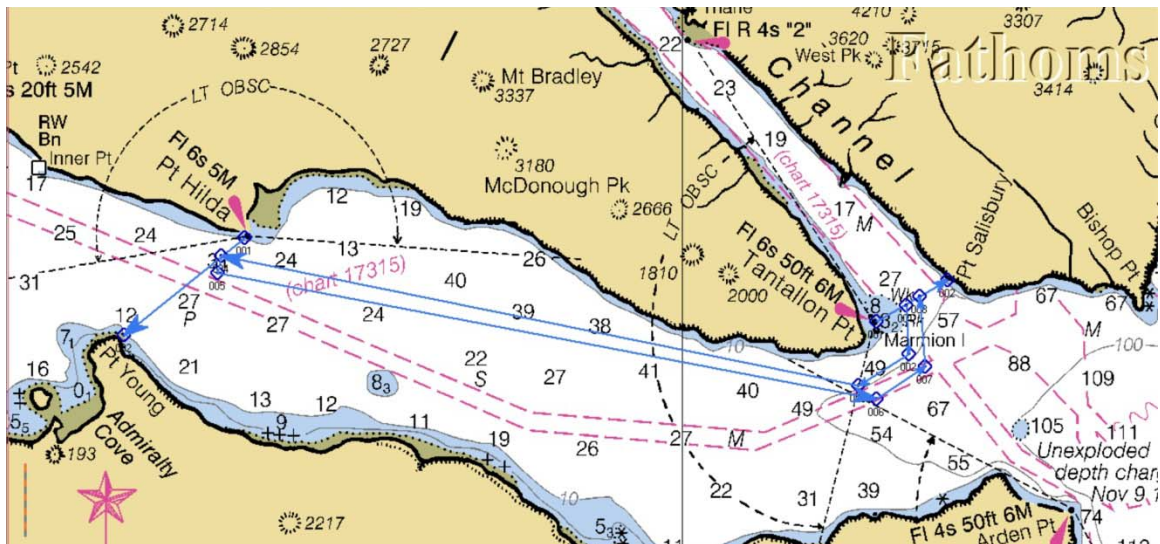




- B. South into Stephens Passage, rounding Grand Island to either port or starboard (Skipper's choice), returning and crossing an imaginary line bearing 060 magnetic to the Marmion Island Day mark.



- C. West into Stephens Passage, crossing an imaginary line between Pt. Hilda and Pt. Young, returning and crossing an imaginary line bearing 060 magnetic to the Marmion Island Day mark.



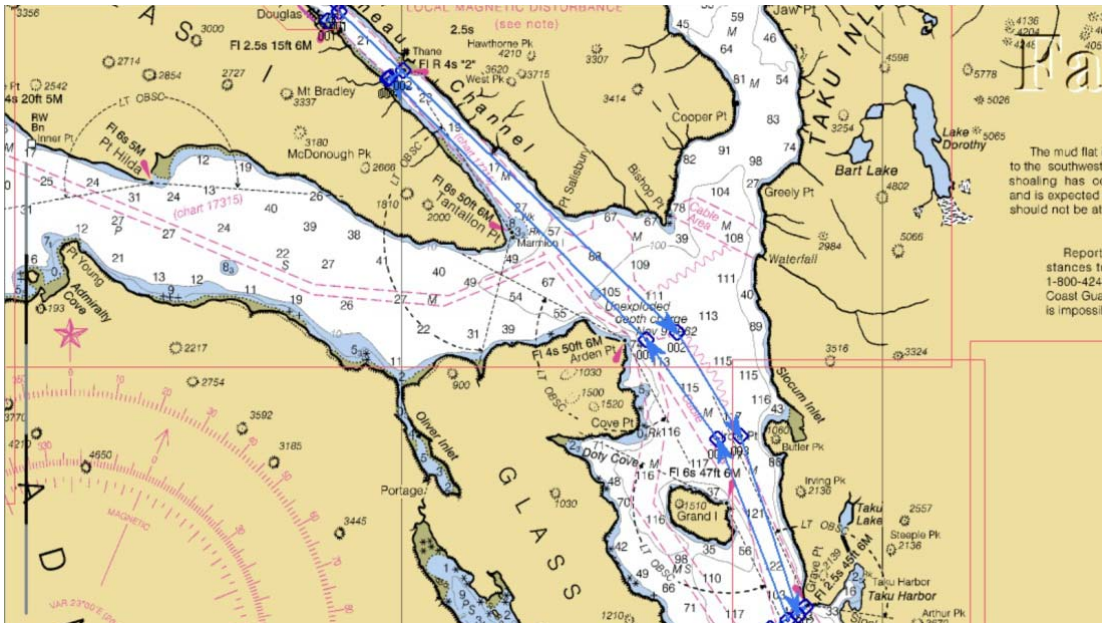


SouthEast Alaska Sailing

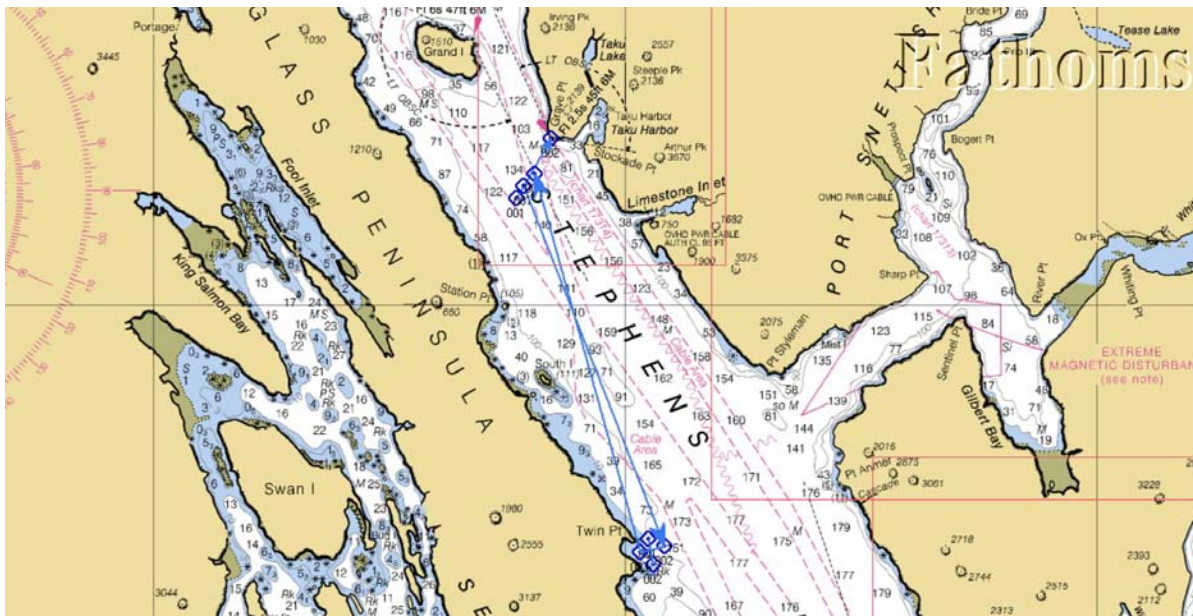
P. O. Box 240166 • Douglas, Alaska 99824 • 907-723-1730 • www.seasailing.us

Round 2: May 26-28, 2012 Jay Ginter Memorial Day Regatta - 3 legs

Leg 1 (Saturday) - Starting at 9:30 a.m. between the Committee Boat (or, for late arrivals, the last satellite earth station at the end of the Rock Dump) and the Mayflower Island Day Mark, proceed south down Gastineau Channel, then south across Taku Inlet, into Stephens Passage passing Grand Island to either port or starboard (Skipper's choice), finishing ½-mile off the entrance to Taku Harbor on an imaginary line bearing 030 magnetic to the Graves Point marker. Boats will dock/anchor overnight in Taku Harbor.

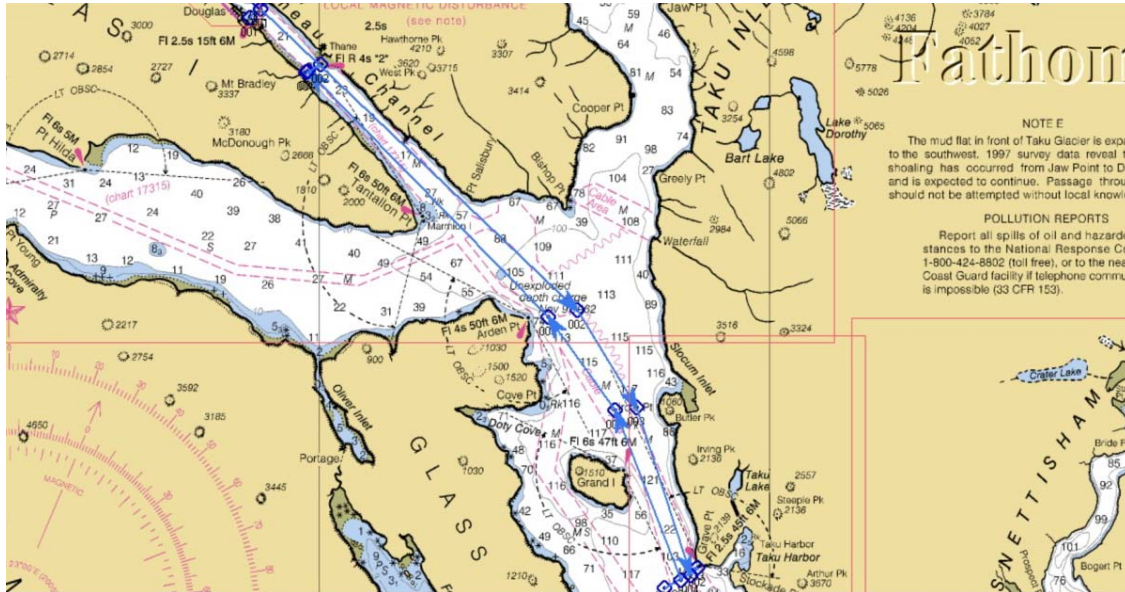


Leg 2 (Sunday) - Starting at 10:00 a.m. at the entrance to Taku Harbor, on an imaginary line bearing 030 magnetic to Graves Point, proceed south down Stephens Passage towards Twin Points, crossing a line between the two points, and returning to Taku Harbor on the same line as the start.



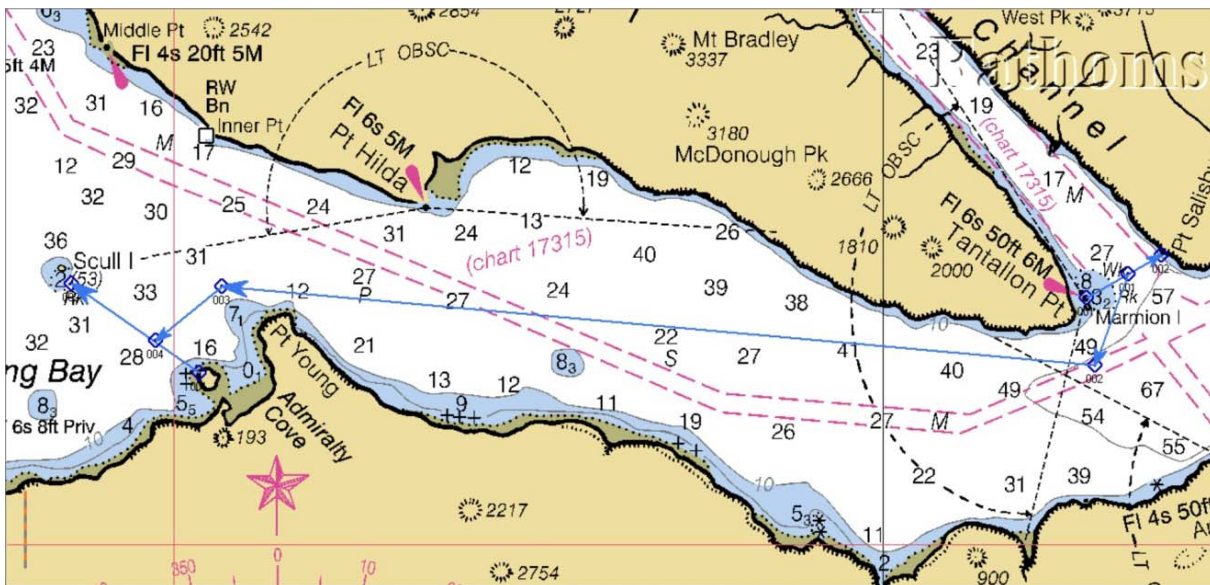


Leg 3 (Monday) – Starting at 9:30 a.m., reverse course of leg 1. Finish on an imaginary line bearing 020 magnetic to Sheep Creek Light in Gastineau Channel (line up the Sheep Creek Light with the midpoint of the Sheep Creek Bridge).



**Round 3: Saturday June 9, 2012
Admiralty Cove Race- 1 leg**

Starting at 10:00 a.m. between the Committee boat and the Marmion Island Day Mark, proceed north into Stephens Passage, down the back side of Douglas Island, finishing within 1/2-mile of the small island just past Point Young in Admiralty Cove, on an imaginary line bearing 280 magnetic to Scull Island. Plan to anchor in Admiralty Cove overnight, with beach bonfire (weather permitting).

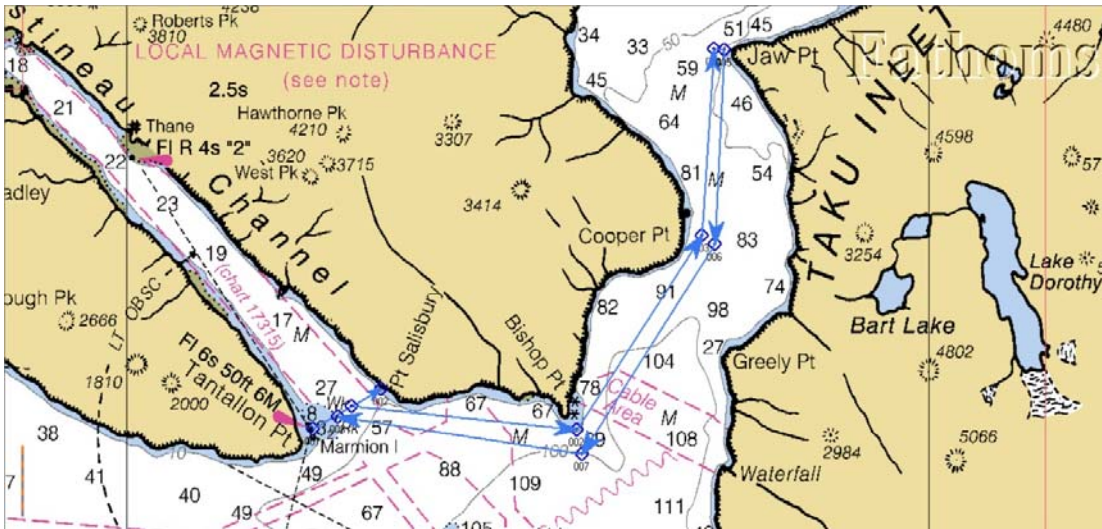




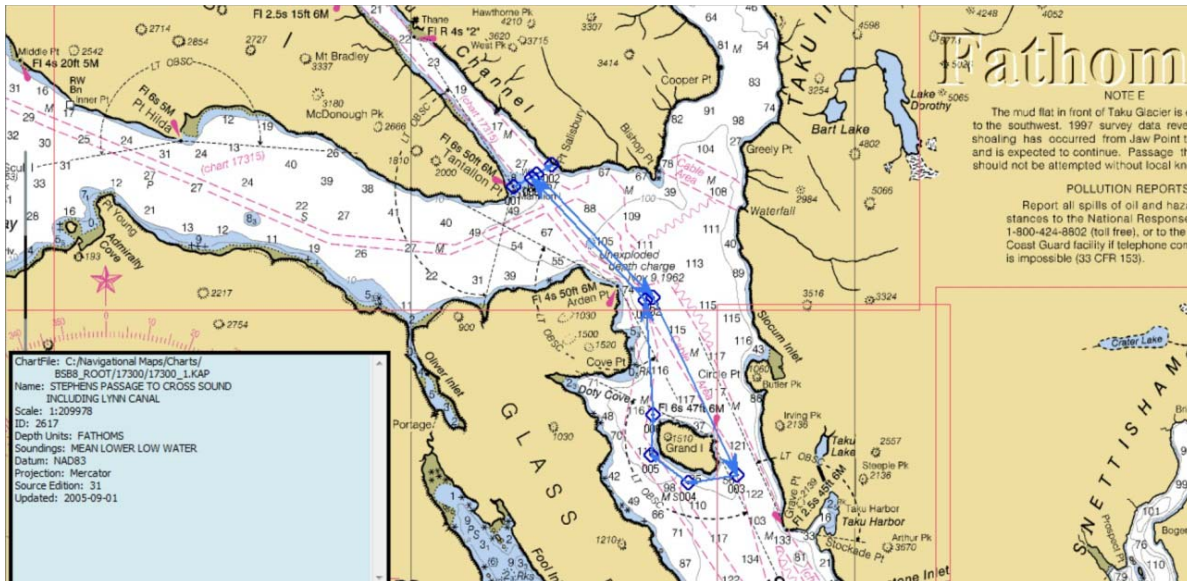
Round 4: Saturday July 7, 2012 Skipper's Choice #2- 1 Leg

Starting at 10:00 a.m. between the Committee boat and the Marmion Island Day Mark, the boats will sail **ONE** of these courses:

- A. North into Taku Inlet rounding the buoy off Jaw Point on a starboard tack, returning and crossing an imaginary line bearing 020 magnetic to Sheep Creek Light in Gastineau Channel (line up the Light with the middle of the Sheep Creek Bridge).

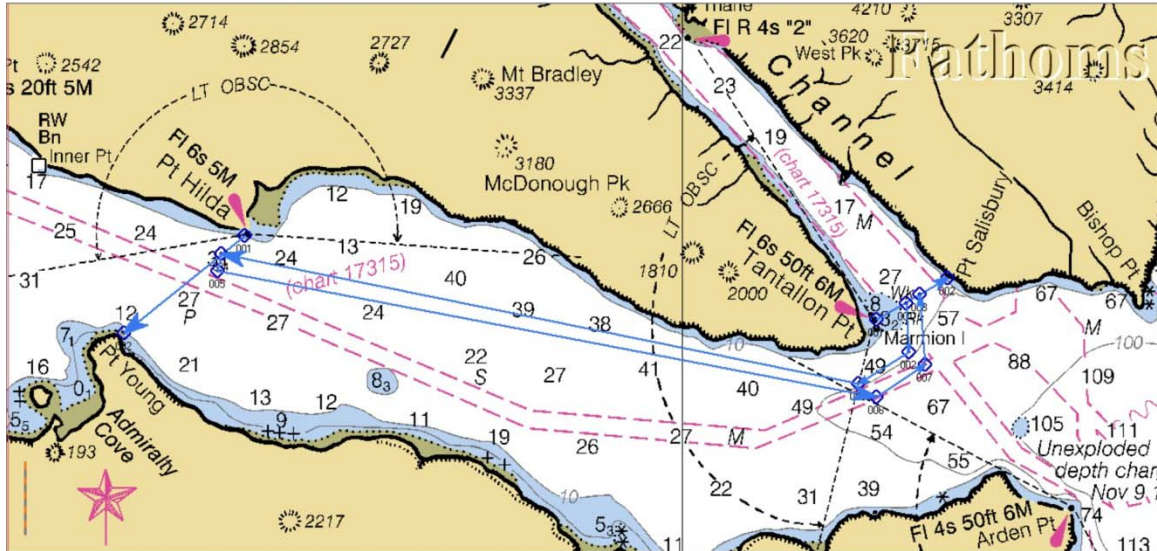


- B. South into Stephens Passage, rounding Grand Island to either port or starboard (Skipper's choice), returning and crossing an imaginary line bearing 020 magnetic to Sheep Creek Light in Gastineau Channel (line up the Light with the middle of the Sheep Creek Bridge).





- C. West into Stephens Passage, crossing an imaginary line between Pt. Hilda and Pt. Young, returning and crossing an imaginary line bearing 060 magnetic to the Marmion Island Day mark.

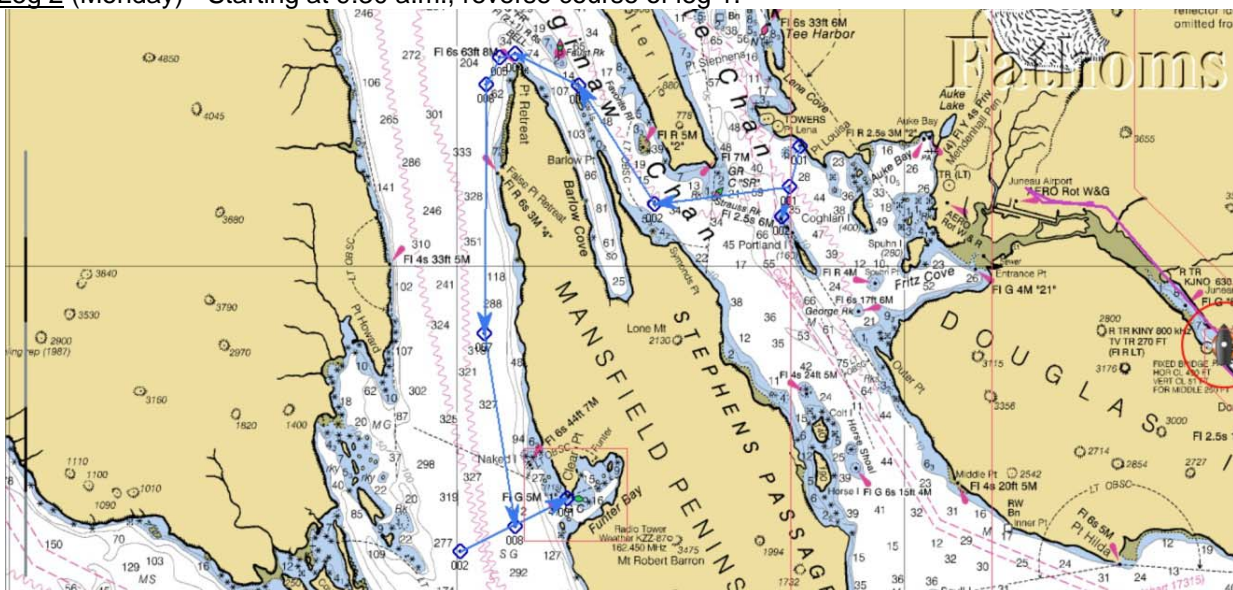


**Round 5: July 21-23, 2012
Funter Bay Race - 2 legs**

Leg 1 (Saturday) – Starting at 9:30 a.m. on an imaginary line in Favorite Channel bearing 195 magnetic to the north light on Portland Island, proceed north, keeping Strauss Rock to starboard, into Saginaw Channel, rounding Pt. Retreat into Lynn Canal, finishing in Funter Bay on an imaginary line off Clear Point bearing 62 magnetic.

(Sunday) – Rest & relaxation day.

Leg 2 (Monday) - Starting at 9:30 a.m., reverse course of leg 1.

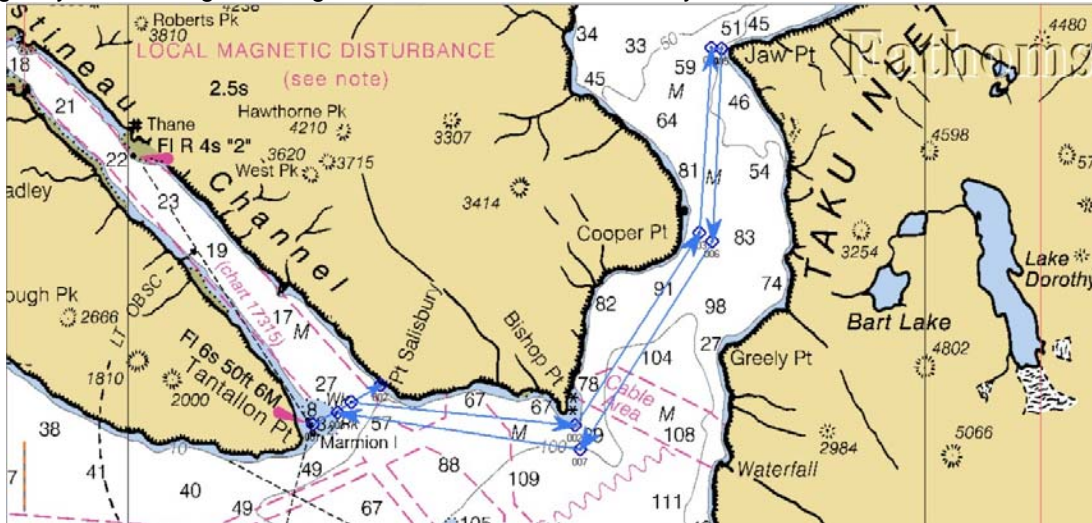




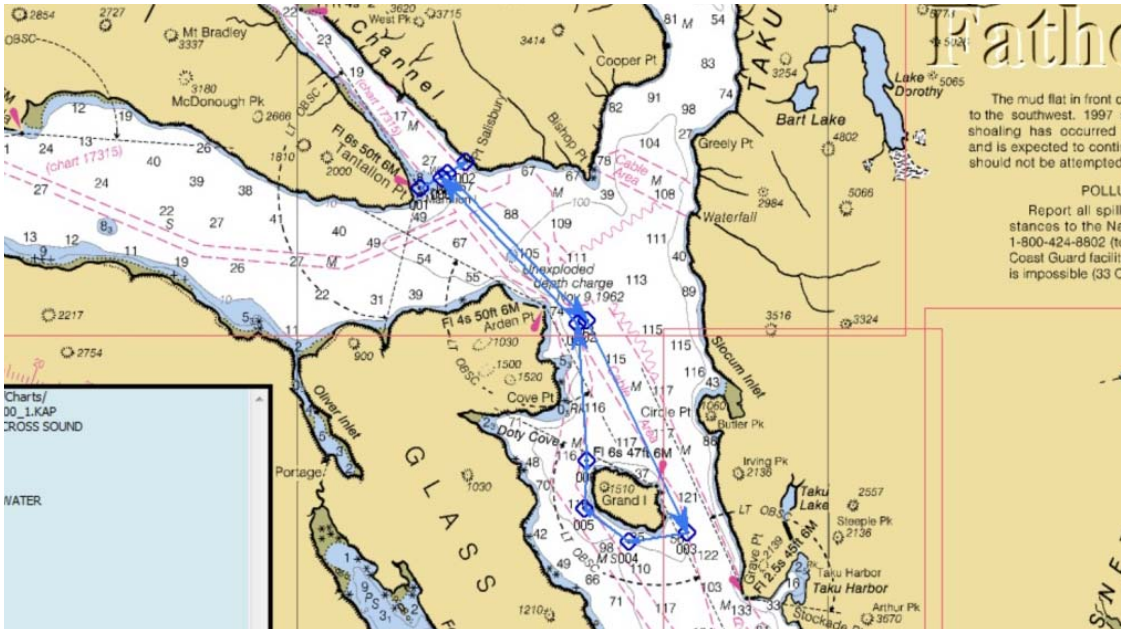
Round 6: Saturday August 4, 2012
Skipper's Choice #3 – 1 Leg

Starting at 10:00 a.m. between the Committee boat and the Marmion Island Day Mark, the boats will sail **ONE** of these courses:

- A. North into Taku Inlet rounding the buoy off Jaw Point on a starboard tack, returning and crossing an imaginary line bearing 060 magnetic to the Marmion Island day mark.

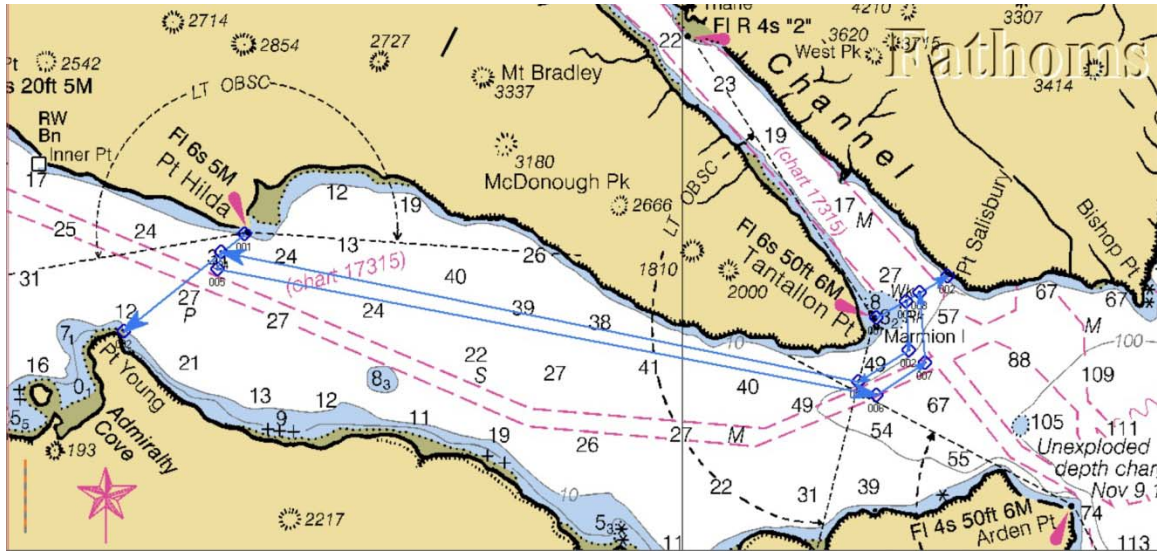


- B. South into Stephens Passage, rounding Grand Island to either port or starboard (Skipper's choice), returning and crossing an imaginary line bearing 060 magnetic to the Marmion Island day mark.





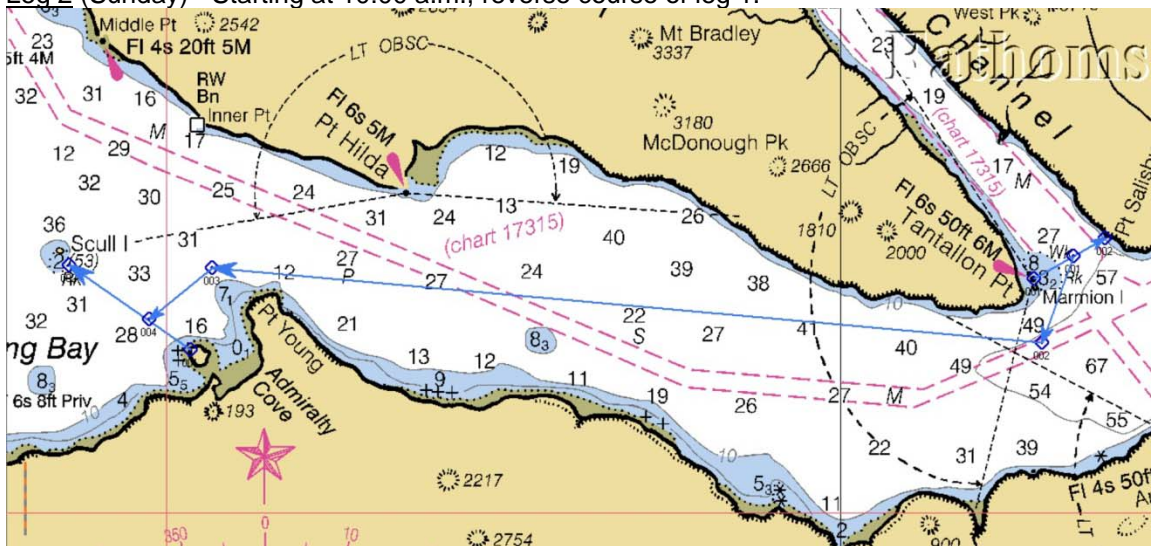
- C. West into Stephens Passage, crossing an imaginary line between Pt. Hilda and Pt. Young, returning and crossing an imaginary line bearing 060 magnetic to the Marmion Island Day mark.



**Round 7: August 18-19, 2012
Admiralty Cove Rally - 2 Legs**

Leg 1 (Saturday) - Starting at 10:00 a.m. between the Committee boat and the Marmion Island Day Mark, proceed north into Stephens Passage, down the back side of Douglas Island, finishing within 1/2-mile of the small island just past Point Young in Admiralty Cove, on an imaginary line bearing 280 magnetic to Scull Island. Plan to anchor in Admiralty Cove overnight, with beach bonfire (weather permitting).

Leg 2 (Sunday) - Starting at 10:00 a.m., reverse course of leg 1.



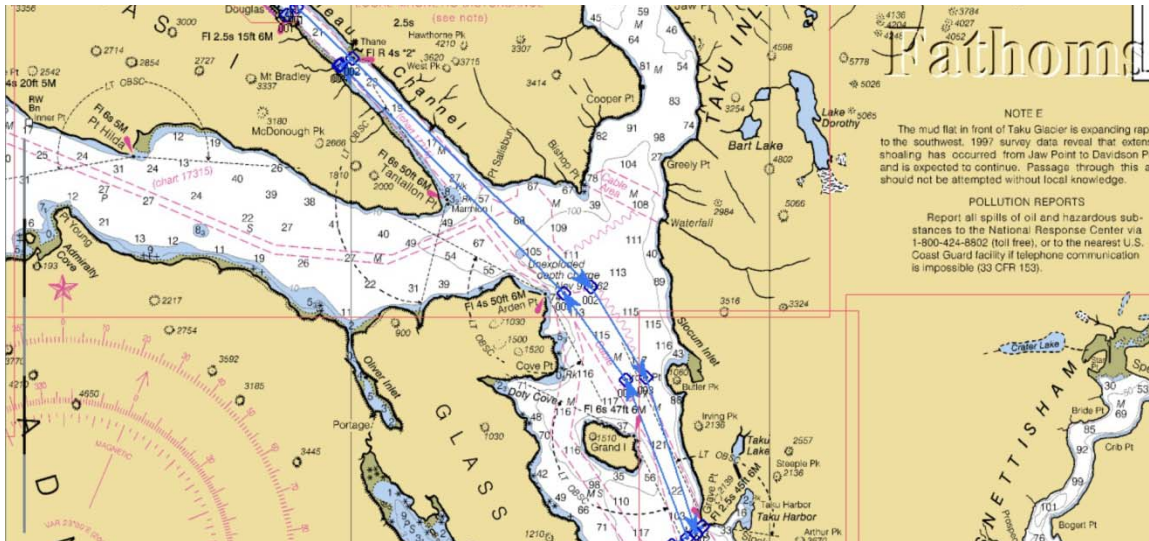


SouthEast Alaska Sailing

P. O. Box 240166 • Douglas, Alaska 99824 • 907-723-1730 • www.seasailing.us

Round 8: Sept. 1-3, 2012 Labor Day Regatta – 3 Legs

Leg 1 (Saturday) - Starting at 9:30 a.m. between the Committee Boat (or, for late arrivals, the last satellite earth station at the end of the Rock Dump) and the Mayflower Island Day Mark, proceed south down Gastineau Channel, then south across Taku Inlet, into Stephens Passage passing Grand Island to either port or starboard (Skipper's choice), finishing ½-mile off the entrance to Taku Harbor on an imaginary line bearing 030 magnetic to the Graves Point marker. Boats will dock/anchor overnight in Taku Harbor.



Leg 2 (Sunday) - Starting at 10:00 a.m. at the entrance to Taku Harbor, on an imaginary line bearing 030 magnetic to Graves Point, proceed south down Stephens Passage towards Twin Points, crossing a line between the two points, and returning to Taku Harbor on the same line as the start.

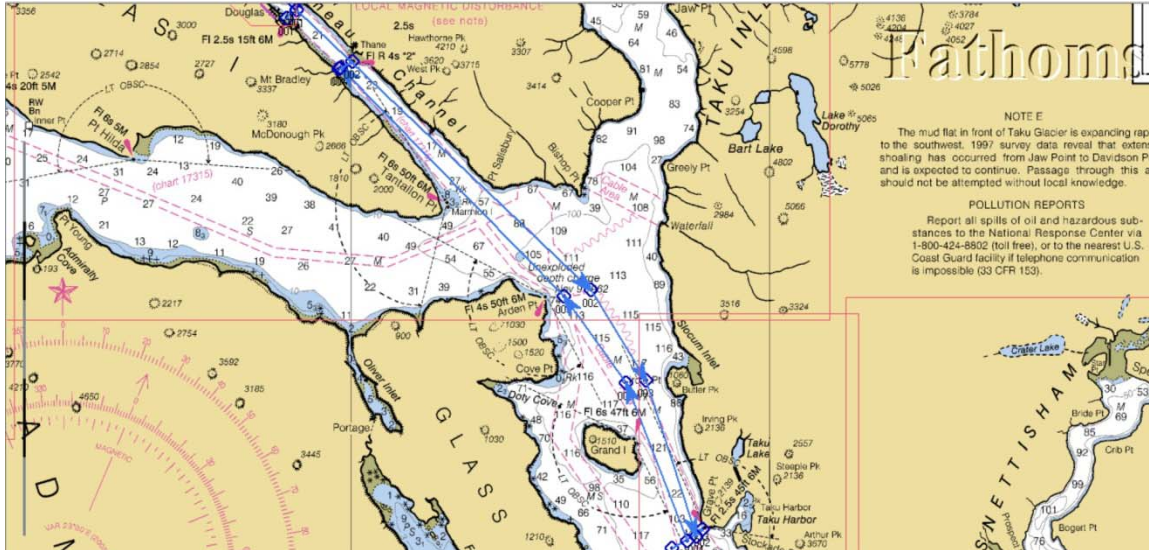




SouthEast Alaska Sailing

P. O. Box 240166 • Douglas, Alaska 99824 • 907-723-1730 • www.seasailing.us

Leg 3 (Monday) – Starting at 9:30 a.m., reverse course of leg 1. Finish on an imaginary line bearing 020 magnetic to Sheep Creek Light in Gastineau Channel (line up the Sheep Creek Light with the midpoint of the Sheep Creek Bridge).



Handicapping:

All vessels will be handicapped using the PHRF-NW handicap system.

Scoring:

The series will be scored by the low-point scoring system according to US Sailing's *The Racing Rules of Sailing (2009-2012)*, Appendix A.

The highest 7 scores for each boat will be thrown out.